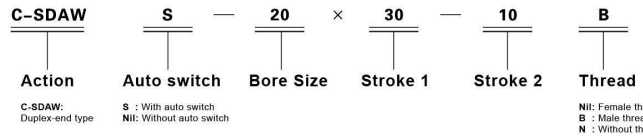


Compact Cylinder

C-SDAW series



How To Order



Ordering Sample

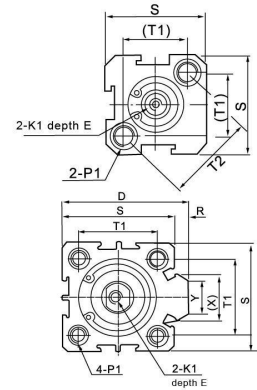
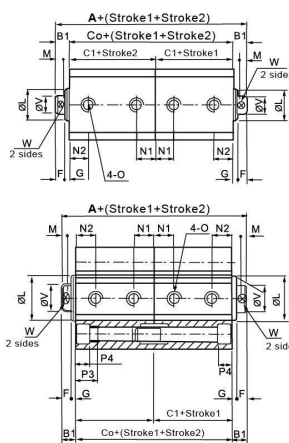
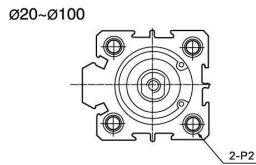
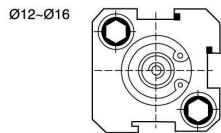
- ① Bore size: 20mm, stroke 1:30mm, stroke 2: 10mm, with auto switch, malethread, duplex-end compact cylinder, the right model: C-SDAWS-20x30-10-B.
- ② Bore size:63mm, stroke 1:35mm, stroke 2:20mm, without auto switch, without thread, duplex-end compact cylinder, the right model: C-SDAW-63x35-10-N.

Symbol



Dimension (mm)

C-SDAW, C-SDAWS Type



Form	Without Auto Switch			With Auto Switch			B1	D	E	F	G	K1	L	M	N1		N2	
	A	CO	C1	A	CO	C1									S=5	S > 5	S=5	S > 5
12	44	34	17	64	54	27	5	-	6	4	1	M3×0.5	10.2	3	5		7.5	
16	48	37	18.5	68	57	28.5	5.5	-	6	4	1.5	M3×0.5	11	3	5.5		8	
20	50	39	19.5	70	59	29.5	5.5	36	8	4	1.5	M4×0.7	13	3	5.5		9	
25	54	42	21	74	62	31	6	42	10	4	2	M5×0.8	17	3	5.5		9.2	
32	63	49	24.5	83	69	34.5	7	50	12	4	3	M6×1	22	3	6.5	9		9
40	66	52	26	86	72	36	7	58.5	12	4	3	M8×1.25	28	3	7.5			9.5
50	74	56	28	94	76	38	9	71.5	15	5	4	M10×1.5	38	3	8	10.5	8	10.5
63	82	64	32	102	84	42	9	84.5	15	5	4	M10×1.5	40	3	9.5	12	9.5	11
80	104	82	41	124	102	51	11	104	20	6	5	M14×1.5	45	4	11.5	14.5	11.5	14.5
100	126	102	51	146	122	61	12	124	20	7	5	M18×1.5	55	4	16	20.5	16	20.5

Bore Size /Symbol	O	P1	P2	P3	P4	R	S	T1	T2	V	W	X	Y
12	M5×0.8	Φ6.5 thread M5x0.8 through-hole:Φ4.2	-	12	4.5	-	25	16.2	23	6	5	-	-
16	M5×0.8	Φ6.5 thread M5x0.8 through-hole:Φ4.2	-	12	4.5	-	29	19.8	28	6	5	-	-
20	M5×0.8	Both sides:Φ6.5 thread M5x0.8 through-hole:Φ4.2	Both sides:Φ6.5 through-hole:Φ5.2	14	4.5	2	34	24	-	8	6	11.3	10
25	M5×0.8	Both sides:Φ8.2 thread M6x1.0 through-hole:Φ4.6	Both sides:Φ8.2 through-hole:Φ6.2	15	5.5	2	40	28	-	10	8	12	10
32	PT1/8	Both sides:Φ8.2 thread M6x1.0 through-hole:Φ4.6	Both sides:Φ8.2 through-hole:Φ6.2	16	5.5	6	44	34	-	12	10	18.3	15
40	PT1/8	Both sides:Φ10 thread M8x1.25 through-hole:Φ6.5	Both sides:Φ10 through-hole:Φ8.2	20	7.5	6.5	52	40	-	16	14	21.3	16
50	PT1/4	Both sides:Φ11 thread M8x1.25 through-hole:Φ6.5	Both sides:Φ11 through-hole:Φ8.5	25	8.5	9.5	62	48	-	20	17	30	20
63	PT1/4	Both sides:Φ11 thread M8x1.25 through-hole:Φ6.5	Both sides:Φ11 through-hole:Φ8.5	25	8.5	9.5	75	60	-	20	17	28.7	20
80	PT3/8	Both sides:Φ14 thread M12x1.75 through-hole:Φ9.2	Both sides:Φ14 through-hole:Φ12.3	25	10.5	10	94	74	-	25	22	36	26
100	PT3/8	Both sides:Φ17.5 thread M14x2 through-hole:Φ11.3	Both sides:Φ17.5 through-hole:Φ14.2	30	13	10	114	90	-	32	27	35	26