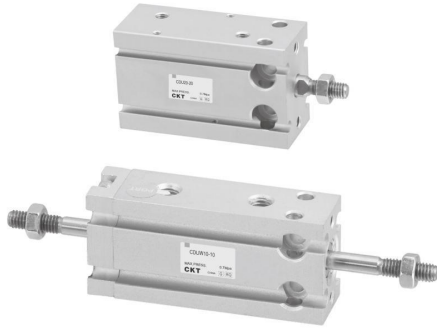


## Free mount cylinder

# C-CU/C-CUK series

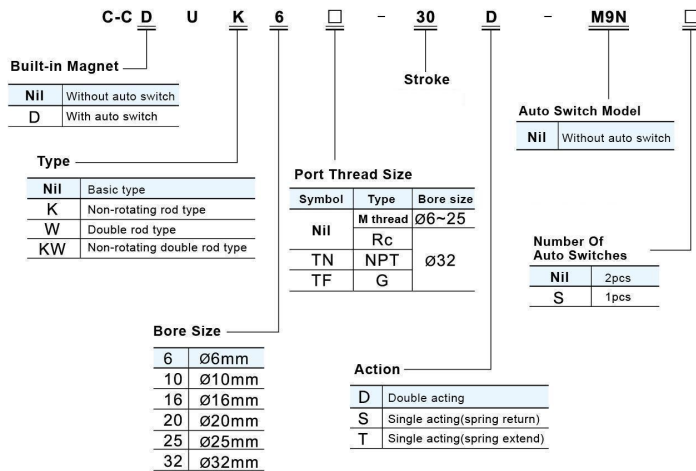


### Specification

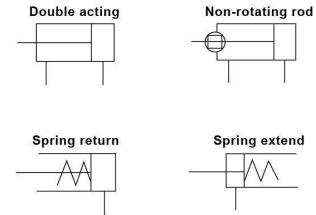
|                               |               |   |      |      |       |      |     |
|-------------------------------|---------------|---|------|------|-------|------|-----|
| Bore size (mm)                |               | 6   | 10   | 16   | 20    | 25   | 32  |
| Fluid                         |               | Air   |      |      |       |      |     |
| Action                        |               | Double acting<br>Single acting: Spring return/extend      |      |      |       |      |     |
| Max. Operating Pressure       |               | 0.7MPa  |      |      |       |      |     |
| Min. Operating Pressure (MPa) | Double acting | single rod  | 0.12 | 0.06 |       | 0.05 |     |
|                               |               | Double rod, rod does not turn gas buffer                  | 0.15 | 0.10 |       | 0.08 |     |
|                               | Single acting | Non-rotating double rod type                              | 0.18 | 0.13 |       | 0.11 |     |
|                               |               | Standard  | 0.20 | 0.15 |       | 0.13 |     |
|                               |               | Non-rotating rod  | 0.23 | 0.18 |       | 0.16 |     |
| Ambient And Fluid Temperature |               | With auto switch: -10~60°C, Without auto switch: -10~70°C |      |      |       |      |     |
| Cushion                       |               | Both ends rubber bumper                                   |      |      |       |      |     |
| Piston Speed                  |               | 50~500mm/s  |      |      |       |      |     |
| Stroke Length Tolerance (mm)  |               | +1.0<br>0   |      |      |       |      |     |
| Lubrication                   |               | Not required  |      |      |       |      |     |
| Mounting                      |               | Free mount (several mounting slot)                        |      |      |       |      |     |
| Rod non-rotating Accuracy     |               | ±0.8°   |      |      | ±0.5° |      |     |
| Port Size                     |               | M5X0.8  |      |      |       |      | 1/8 |

Turbine No. 1 oil can be used:ISOVG32

### How To Order



### Symbol

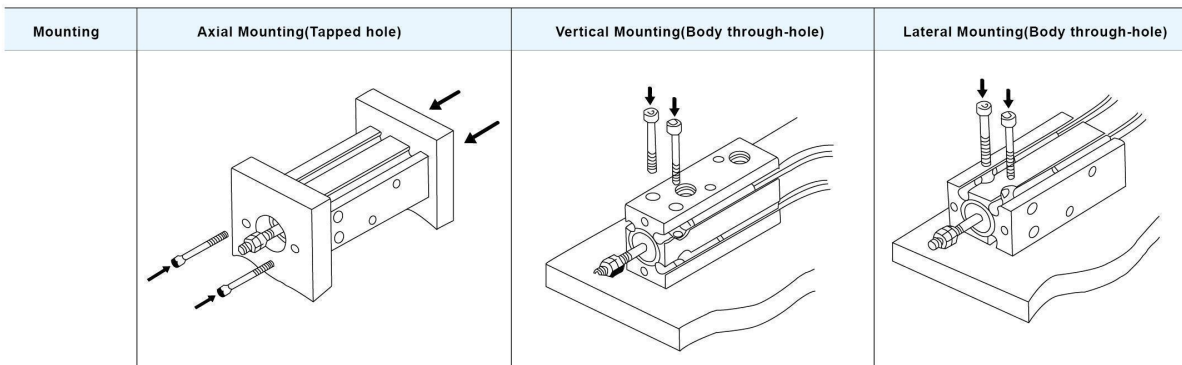


### Stroke/Auto Switch Model

| Bore size (mm) | Standard Stroke (mm)          |               | Long stroke (double acting) | *Auto Switch Model (direct mount) |
|----------------|-------------------------------|---------------|-----------------------------|-----------------------------------|
|                | Double acting                 | Single acting |                             |                                   |
| 6              |                               |               | 40                          | M9N<br>M9B<br>M9P                 |
| 10             | 5, 10, 15, 20, 25, 30         |               | 50                          |                                   |
| 16             |                               |               | 60                          |                                   |
| 20             |                               | 5, 10, 15     | 60, 70                      |                                   |
| 25             | 5, 10, 15, 20, 25, 30, 40, 50 |               | 80, 90                      |                                   |
| 32             |                               |               | 100                         |                                   |

Conductor length indicates the mark: Nil -0.5mm, L-3m, Z-5m, Example: M9N, M9NL

### Adaptable installation/cuboid cylinder



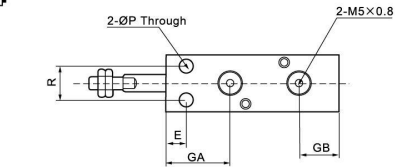
## Free mount cylinder

# C-CU/C-CUK series

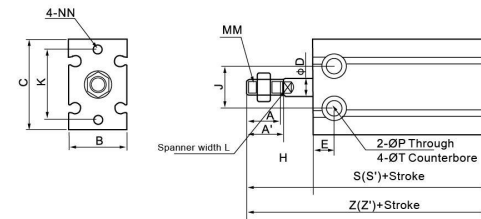
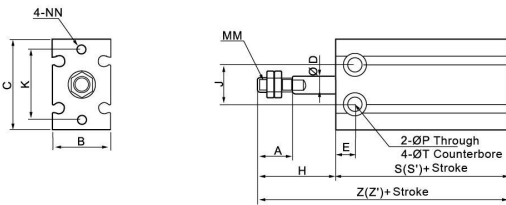
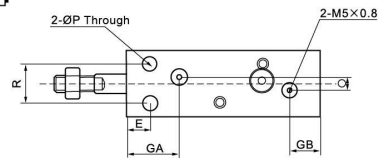
### Dimension (mm)

Basic type, built-in magnet type(double acting, single acting:spring return/extend)

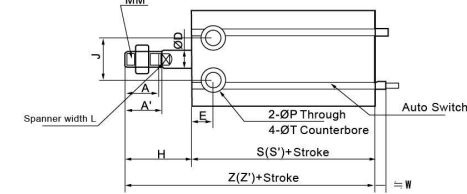
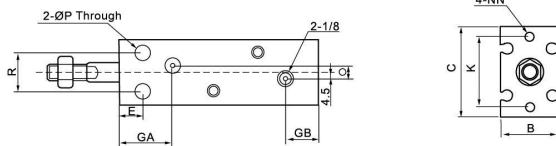
**Ø6,Ø10**



**Ø16~Ø25**



**Ø32**



### Dimension

| Model  | A    | A'   | B  | C  | ØD | E  | GA   | GB   | J  | K  | L  | MM       | NN          | ØP  | Q    | R  | ØT         |
|--------|------|------|----|----|----|----|------|------|----|----|----|----------|-------------|-----|------|----|------------|
| C-CU6  | 7    | -    | 13 | 22 | 3  | 7  | 15   | 10   | 10 | 17 | -  | M3×0.5   | M3X0.5deep5 | 3.2 | -    | 7  | 6deep4.8   |
| C-CU10 | 10   | -    | 15 | 24 | 4  | 7  | 16.5 | 10   | 11 | 18 | -  | M4×0.7   | M3X0.5deep5 | 3.2 | -    | 9  | 6deep5     |
| C-CU16 | 11   | 12.5 | 20 | 32 | 6  | 7  | 16.5 | 11.5 | 14 | 25 | 5  | M5×0.8   | M4X0.7deep6 | 4.5 | 4    | 12 | 7.6deep6.5 |
| C-CU20 | 12   | 14   | 26 | 40 | 8  | 9  | 19   | 12.5 | 16 | 30 | 6  | M6×1.0   | M5X0.8deep8 | 5.5 | 9    | 16 | 9.3deep8   |
| C-CU25 | 15.5 | 18   | 32 | 50 | 10 | 10 | 21.5 | 13   | 20 | 38 | 8  | M8×1.25  | M5X0.8deep8 | 5.5 | 9    | 20 | 9.3deep9   |
| C-CU32 | 19.5 | 22   | 40 | 62 | 12 | 11 | 23   | 13   | 24 | 48 | 10 | M10×1.25 | M6X1.0deep9 | 6.6 | 13.5 | 24 | 11deep11.5 |

### Double Acting Dimension

| Model    | H  | Basic Type |      | Built-in Magnet |     |      |
|----------|----|------------|------|-----------------|-----|------|
|          |    | S          | Z    | W               | S'  | Z'   |
|          |    | 5st        | 10st | 15st            | 5st | 10st |
| C-CU6-D  | 13 | 33         | 46   | 2.5             | 33  | 46   |
| C-CU10-D | 16 | 36         | 52   | 1               | 36  | 52   |
| C-CU16-D | 16 | 30         | 46   | 0               | 40  | 56   |
| C-CU20-D | 19 | 36         | 55   | 1               | 46  | 65   |
| C-CU25-D | 23 | 40         | 63   | -1              | 50  | 73   |
| C-CU32-D | 27 | 42         | 69   | -4              | 52  | 79   |

### Single Acting(Spring Return) Dimension

| Model    | H  | Basic Type |      |      |     |      |      | Built-in Magnet |     |      |      |     |      |      |
|----------|----|------------|------|------|-----|------|------|-----------------|-----|------|------|-----|------|------|
|          |    | S          |      |      | Z   |      |      | W               | S'  |      |      | Z'  |      |      |
|          |    | 5st        | 10st | 15st | 5st | 10st | 15st |                 | 5st | 10st | 15st | 5st | 10st | 15st |
| C-CU6-S  | 13 | 38         | 43   | 48   | 51  | 56   | 61   | 2.5             | 38  | 43   | 48   | 51  | 56   | 61   |
| C-CU10-S | 16 | 41         | 46   | 56   | 57  | 62   | 72   | 1               | 41  | 46   | 56   | 57  | 62   | 72   |
| C-CU16-S | 16 | 35         | 40   | 50   | 51  | 56   | 66   | 0               | 45  | 50   | 60   | 61  | 66   | 76   |
| C-CU20-S | 19 | 41         | 46   | 56   | 60  | 65   | 75   | 1               | 51  | 56   | 66   | 70  | 75   | 85   |
| C-CU25-S | 23 | 45         | 50   | 60   | 68  | 73   | 83   | -1              | 55  | 60   | 70   | 78  | 83   | 93   |
| C-CU32-S | 27 | 47         | 52   | 62   | 74  | 79   | 89   | -4              | 57  | 62   | 72   | 84  | 89   | 99   |

### Single Acting(Spring Extend) Dimension

\*St + Stroke

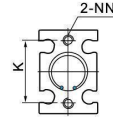
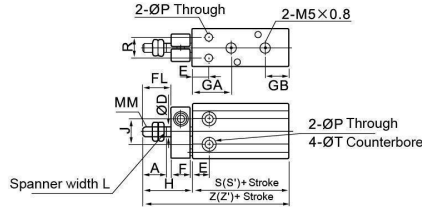
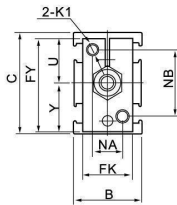
| Model    | H   |      |      | Basic Type |      |      |     |      |      | Built-in Magnet |     |      |      |     |      |      |
|----------|-----|------|------|------------|------|------|-----|------|------|-----------------|-----|------|------|-----|------|------|
|          |     |      |      | S          |      |      | Z   |      |      | W               | S'  |      |      | Z'  |      |      |
|          | 5st | 10st | 15st | 5st        | 10st | 15st | 5st | 10st | 15st |                 | 5st | 10st | 15st | 5st | 10st | 15st |
| C-CU6-T  | 18  | 23   | 28   | 38         | 43   | 48   | 56  | 66   | 76   | 2.5             | 38  | 43   | 48   | 56  | 66   | 76   |
| C-CU10-T | 21  | 26   | 31   | 41         | 46   | 56   | 62  | 72   | 87   | 1               | 41  | 46   | 56   | 62  | 72   | 87   |
| C-CU16-T | 21  | 26   | 31   | 45         | 50   | 60   | 66  | 76   | 91   | 0               | 45  | 50   | 60   | 66  | 76   | 91   |
| C-CU20-T | 24  | 29   | 34   | 41         | 46   | 56   | 65  | 75   | 90   | 1               | 51  | 56   | 66   | 75  | 85   | 100  |
| C-CU25-T | 28  | 33   | 38   | 45         | 50   | 60   | 73  | 83   | 98   | -1              | 55  | 60   | 70   | 83  | 93   | 108  |
| C-CU32-T | 32  | 37   | 42   | 47         | 52   | 62   | 79  | 89   | 104  | -4              | 57  | 62   | 72   | 89  | 99   | 114  |

# Free mount cylinder

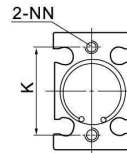
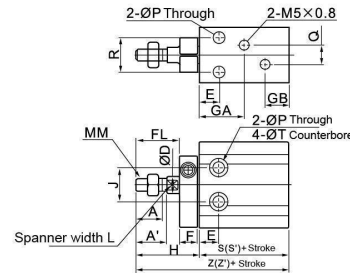
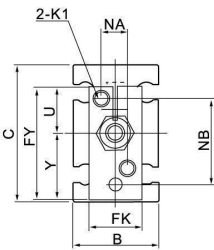
## C-CU/C-CUK series

Non-rotating rod type, built-in magnet type(double acting, single acting:spring return/extend)

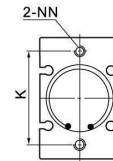
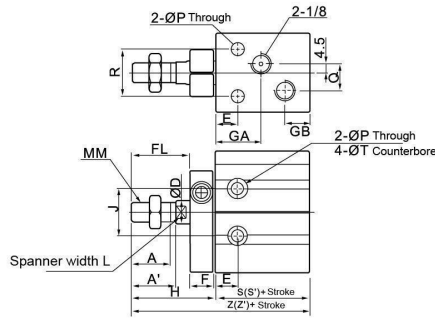
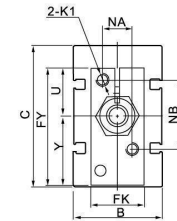
Ø6,Ø10



Ø16~Ø25



Ø32



### Dimension

| Model     | A    | A'   | B  | C  | ØD | E  | F  | FL | FK | FY   | GA   | GB   | H  | J  | K  | L  | MM       | NA | NB | NN          | ØP  | Q    | R  | ØT         | U    | Y    | K1 |
|-----------|------|------|----|----|----|----|----|----|----|------|------|------|----|----|----|----|----------|----|----|-------------|-----|------|----|------------|------|------|----|
| C-CU UK6  | 7    | -    | 13 | 22 | 3  | 7  | 8  | 9  | 11 | 20.5 | 15   | 10   | 18 | 10 | 17 | -  | M3×0.5   | 6  | 14 | M3X0.5deep5 | 3.4 | -    | 7  | 6deep4.8   | 10   | 10.5 | M3 |
| C-CU UK10 | 10   | -    | 15 | 24 | 4  | 7  | 8  | 12 | 12 | 22   | 16.5 | 10   | 21 | 11 | 18 | -  | M4×0.7   | 7  | 15 | M3X0.5deep5 | 3.4 | -    | 9  | 6deep5     | 10.5 | 11.5 | M3 |
| C-CU UK16 | 11   | 12.5 | 20 | 32 | 6  | 7  | 8  | 17 | 13 | 28   | 16.5 | 11.5 | 26 | 14 | 25 | 5  | M5×0.8   | 6  | 18 | M4X0.7deep6 | 4.5 | 4    | 12 | 7.6deep6.5 | 12.5 | 15.5 | M4 |
| C-CU UK20 | 12   | 14   | 26 | 40 | 8  | 9  | 8  | 20 | 16 | 33   | 19   | 12.5 | 29 | 16 | 30 | 6  | M6×1.0   | 8  | 20 | M5X0.8deep8 | 5.5 | 9    | 16 | 9.3deep8   | 13.5 | 19.5 | M4 |
| C-CU UK25 | 15.5 | 18   | 32 | 50 | 10 | 10 | 10 | 22 | 20 | 43.5 | 21.5 | 13   | 33 | 20 | 38 | 8  | M8×1.25  | 10 | 28 | M5X0.8deep8 | 5.5 | 9    | 20 | 9.3deep9   | 19   | 24.5 | M5 |
| C-CU UK32 | 19.5 | 22   | 40 | 62 | 12 | 11 | 12 | 29 | 24 | 51.5 | 23   | 12.5 | 42 | 24 | 48 | 10 | M10×1.25 | 12 | 32 | M6X1.0deep9 | 6.6 | 13.5 | 24 | 11deep11.5 | 21   | 30.5 | M5 |

### Double Acting Dimension

| Model        | H  | Without Auto Switch |    | Built-in Magnet Switch |    |    |
|--------------|----|---------------------|----|------------------------|----|----|
|              |    | S                   | Z  | W                      | S' | Z' |
| C-CU UK6-□D  | 18 | 33                  | 51 | 2.5                    | 33 | 51 |
| C-CU UK10-□D | 21 | 36                  | 57 | 1                      | 36 | 57 |
| C-CU UK16-□D | 26 | 30                  | 56 | 0                      | 40 | 66 |
| C-CU UK20-□D | 29 | 36                  | 65 | 1                      | 46 | 75 |
| C-CU UK25-□D | 33 | 40                  | 73 | -1                     | 50 | 83 |
| C-CU UK32-□D | 42 | 42                  | 84 | -4                     | 52 | 94 |

### Single Acting(Spring Return) Dimension

| Model        | H  | Without Auto Switch |      |      |     |      |      | Built-in Magnet Switch |     |      |      |     |      |      |  |  |
|--------------|----|---------------------|------|------|-----|------|------|------------------------|-----|------|------|-----|------|------|--|--|
|              |    | S                   |      |      | Z   |      |      | W                      | S'  |      |      | Z'  |      |      |  |  |
|              |    | 5st                 | 10st | 15st | 5st | 10st | 15st |                        | 5st | 10st | 15st | 5st | 10st | 15st |  |  |
| C-CU UK6-□S  | 18 | 38                  | 43   | 48   | 56  | 61   | 66   | 2.5                    | 38  | 43   | 48   | 56  | 61   | 66   |  |  |
| C-CU UK10-□S | 21 | 41                  | 46   | 56   | 62  | 67   | 77   | 1                      | 41  | 46   | 56   | 62  | 67   | 77   |  |  |
| C-CU UK16-□S | 26 | 35                  | 40   | 50   | 61  | 66   | 76   | 0                      | 45  | 50   | 60   | 71  | 76   | 86   |  |  |
| C-CU UK20-□S | 29 | 41                  | 46   | 56   | 70  | 75   | 85   | 1                      | 51  | 56   | 66   | 80  | 85   | 95   |  |  |
| C-CU UK25-□S | 33 | 45                  | 50   | 60   | 78  | 83   | 93   | -1                     | 55  | 60   | 70   | 88  | 93   | 103  |  |  |
| C-CU UK32-□S | 42 | 47                  | 52   | 62   | 89  | 94   | 104  | -4                     | 57  | 62   | 72   | 99  | 104  | 114  |  |  |

### Single Acting(Spring Extend) Dimension

| Model        | H   |      |      | ØT           | U    | Y    | Without Auto Switch |      |      |     |      |      | Built-in Magnet Switch |     |      |      |     |      |      |
|--------------|-----|------|------|--------------|------|------|---------------------|------|------|-----|------|------|------------------------|-----|------|------|-----|------|------|
|              | 5st | 10st | 15st |              |      |      | S                   |      |      | Z   |      |      | W                      | S'  |      |      | Z'  |      |      |
|              |     |      |      |              |      |      | 5st                 | 10st | 15st | 5st | 10st | 15st |                        | 5st | 10st | 15st | 5st | 10st | 15st |
| C-CU UK6-□T  | 23  | 28   | 33   | Ø6 Depth4.8  | 10   | 10.5 | 38                  | 43   | 48   | 61  | 71   | 81   | 2.5                    | 38  | 43   | 48   | 61  | 71   | 81   |
| C-CU UK10-□T | 26  | 31   | 36   | Ø6Depth5     | 10.5 | 11.5 | 41                  | 46   | 56   | 67  | 77   | 92   | 1                      | 41  | 46   | 56   | 67  | 77   | 92   |
| C-CU UK16-□T | 31  | 36   | 41   | Ø7.6Depth6.5 | 12.5 | 15.5 | 45                  | 50   | 60   | 76  | 86   | 101  | 0                      | 45  | 50   | 60   | 76  | 86   | 101  |
| C-CU UK20-□T | 34  | 39   | 44   | Ø9.5Depth8   | 13.5 | 19.5 | 41                  | 46   | 56   | 75  | 85   | 100  | 1                      | 51  | 56   | 66   | 85  | 95   | 110  |
| C-CU UK25-□T | 38  | 43   | 48   | Ø9.5Depth9   | 19   | 24.5 | 45                  | 50   | 60   | 83  | 93   | 108  | -1                     | 55  | 60   | 70   | 93  | 103  | 118  |
| C-CU UK32-□T | 47  | 52   | 57   | Ø11Depth11.5 | 21   | 30.5 | 47                  | 52   | 62   | 94  | 104  | 119  | -4                     | 57  | 62   | 72   | 104 | 114  | 129  |

\*St + Stroke