

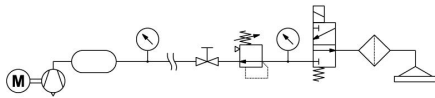
Vacuum Control Valve C-IRV SERIES



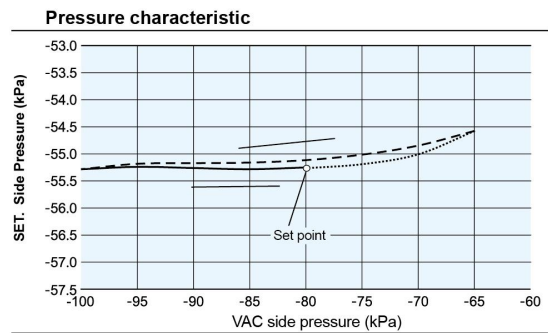
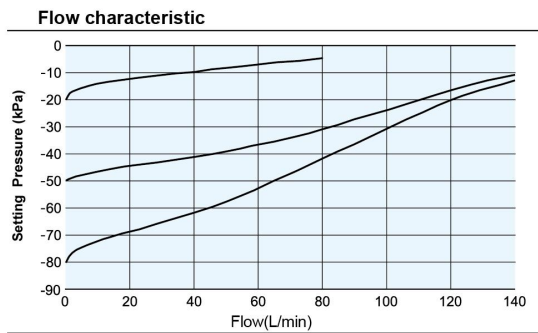
Symbol



Application

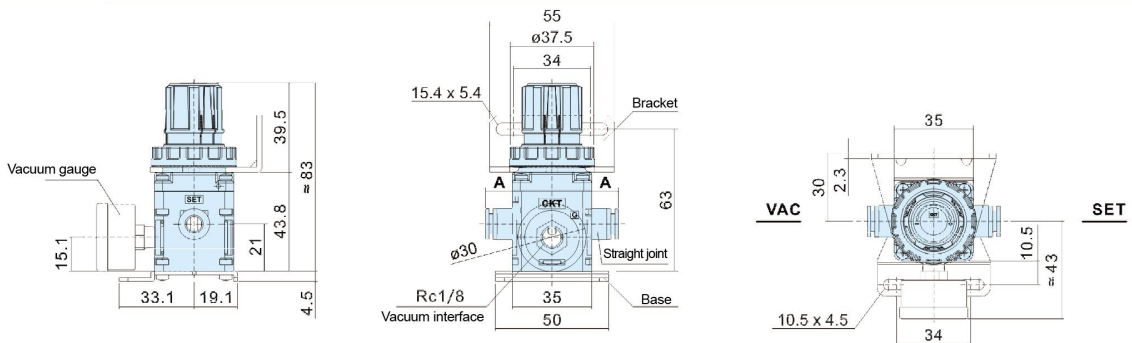


Flow Curve



Dimension

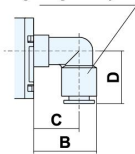
(mm)



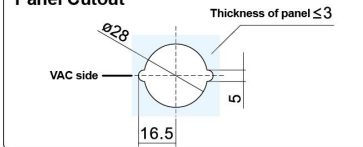
Quick Connector

Type	Model	Tube Diameter	VAC/SET			
			A	B	C	D
Straight joint	KQ10H-C6	ø6	10	x	x	x
	KQ10H-C8	ø8	12	x	x	x
Right angle bent joint	KQ10L-C6	ø6	x	26	19	20
	KQ10L-C8	ø8	x	28	20	23

Right angle bent joint



Panel Cutout



How To Order

C-IRV ① **10** - ② **L** ③ **C08** ④ **[]** ⑤ **[]**

① Main Boy Size
10 Max. flow 140L/min

② Quick Connector Type
Blank Straight joint
L Right angle bent joint

③ Tube Diameter (mm)
C06 ø6
C08 ø8

④ Bracket
Blank Without bracket
B With bracket
L With base

⑤ Vacuum Gauge
Blank Without vacuum gauge
G With vacuum gauge

Specification

Fluid	Air
Setting Pressure Range	-100 ~ -1.3 kPa
Working And Environmental Temperature	5 ~ 60 °C
Knob Adjustment Accuracy	0.13 kPa以下
Air Suction Flow	0.6 l/min