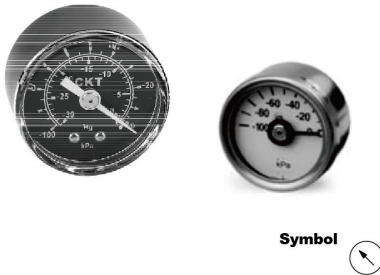
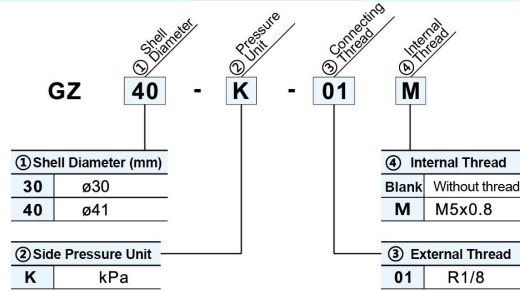


Vacuum Gauge GZ SERIES



How To Order



Specification

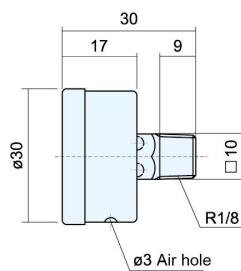
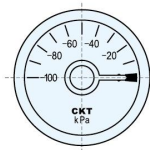
Item	Model	GZ30-K-01	GZ40-K-01
Connecting Way		Axial direction(back thread type)	
Connecting Thread		R1/8 (Optional M: Internal thread M5)	
Fluid		Air	
Pressure Range		-100~0 kPa(-30~0Hg)	
Indicator Accuracy		±3% (Full scale)	
Unit		kPa,Hg	
Operating Environmental Condition		温度：-40~70℃，Relative humidity less than 80%	
Operating Temperature Effecton		使用温度：20±5℃，Operating humidity: no more than 0.4%	
Material	Shell	Stainless steel	ABS
	Transparent Cover	Glass	PMMA
	Connector	Copper alloy	

注) 压力表安装在产品上时，不要过分紧固，以免造成破坏。密封剂使用密封带，推荐紧固力矩R1/8:7~9N·m。

Dimension

(mm)

<GZ30-K-01>



<GZ40-K-01>

