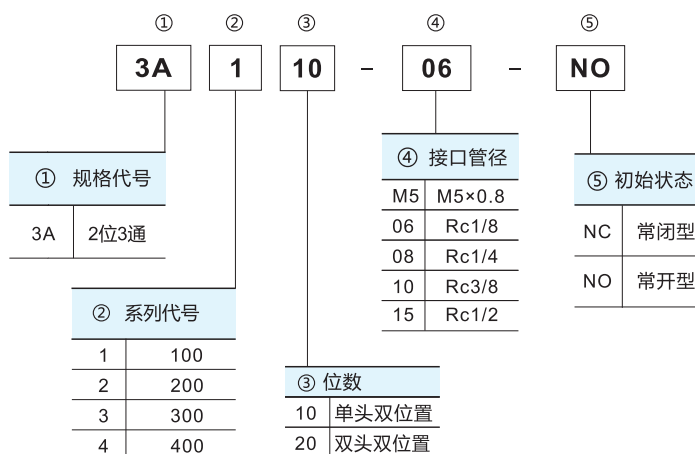


3通气控阀

3A系列

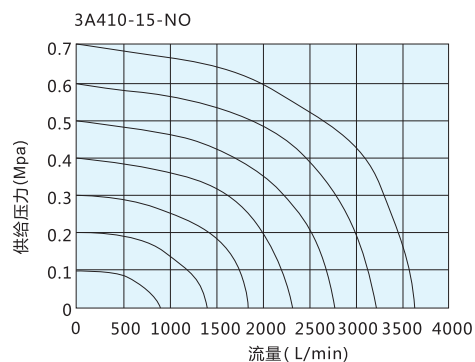
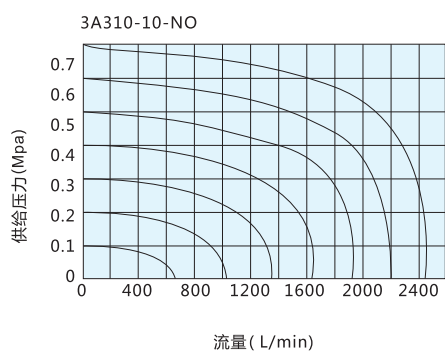
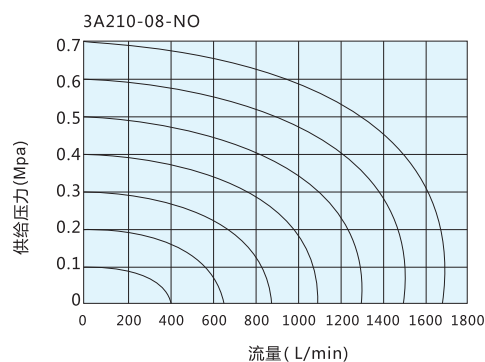
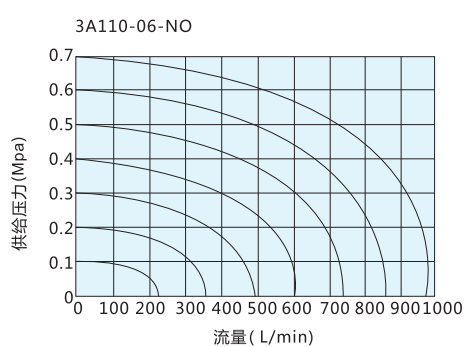
型号表示方法



规格

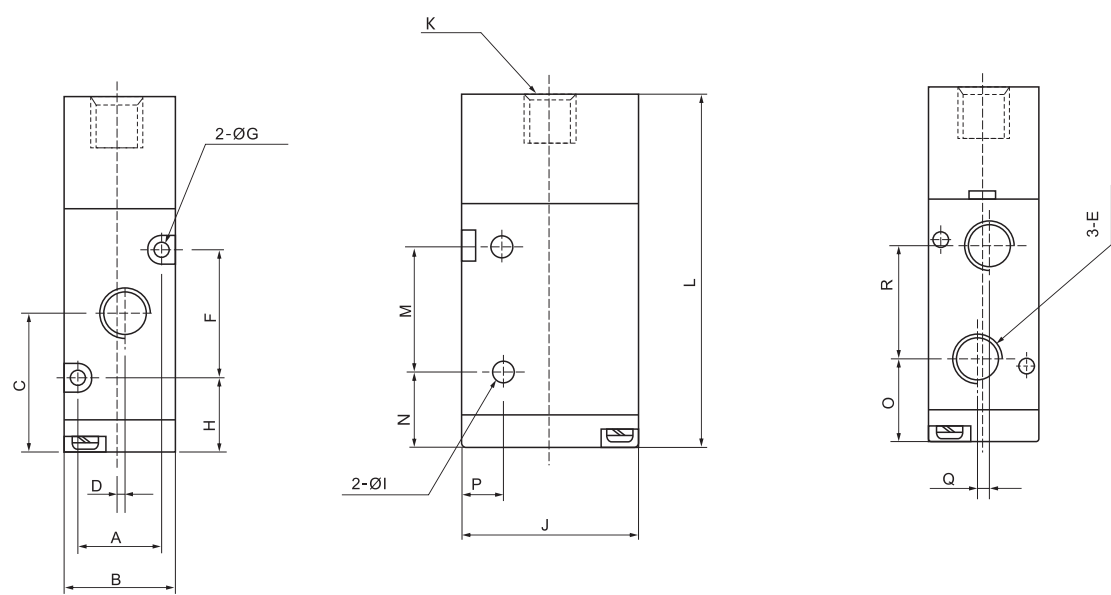
允许的流体	空气
使用压力范围	0.15~0.8MPa
耐压	1.2MPa
环境及流体温度	5~60°C
润滑	不需要
最高动作频率	5Hz

流量特性

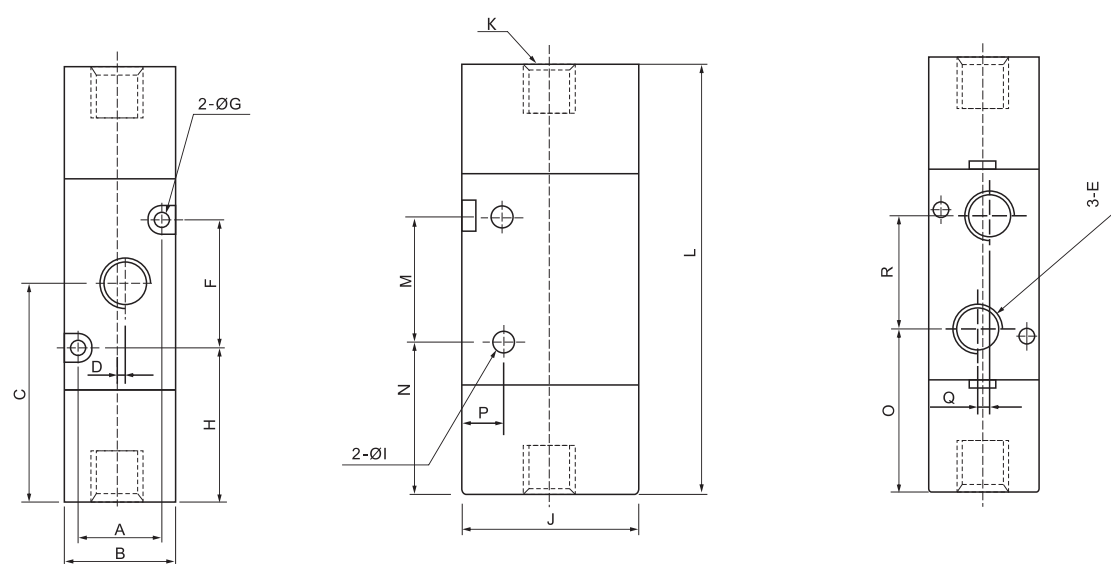


3通气控阀 3A系列

尺寸



型号	A	B	C	D	E	F	G	H	I	J	K	L	M	N	O	P	Q	R
3A110-M5	13	18	22.7	0	M5x0.8	19	Ø3.3	13.2	Ø3.1	27	Rc1/8	56.5	21	12.2	14.7	7.7	0	14.2
3A110-06	13	18	23.7	1	Rc1/8	19	Ø3.3	13.2	Ø3.1	27	Rc1/8	56.5	21	12.2	14.7	7.7	2	16
3A210-06	17	22	27.7	0	Rc1/8	30	Ø3.2	12.7	Ø4.2	35	Rc1/8	70	25	15.2	16.7	8.2	0	22
3A210-08	17	22	28.7	1.5	Rc1/4	30	Ø3.2	12.7	Ø4.2	35	Rc1/8	70	25	15.2	16.7	8.2	0	22.5
3A310-08	20	27	32.5	0	Rc1/4	35	Ø4.3	15	Ø4.3	40	Rc1/8	80.5	30	17.5	20.5	10.5	0	24
3A310-10	20	27	32.5	2	Rc3/8	35	Ø4.3	15	Ø4.3	40	Rc1/8	80.5	30	17.5	20.5	10.5	0	24
3A410-15	27	34	42	3	Rc1/2	48	Ø4.5	17.5	Ø4.5	50	Rc1/8	100	48	17.5	25	13	0	35



型号	A	B	C	D	E	F	G	H	I	J	K	L	M	N	O	P	Q	R
3A120-M5	13	18	34.5	0	M5x0.8	19	Ø3.3	25	Ø3.1	27	Rc1/8	69	21	24	26.5	7.7	0	14.2
3A120-06	13	18	34.5	1	Rc1/8	19	Ø3.3	25	Ø3.1	27	Rc1/8	69	21	24	26.5	7.7	2	16
3A220-06	17	22	42	0	Rc1/8	30	Ø3.2	27	Ø4.2	35	Rc1/8	84	25	29.5	30.75	8.2	0	22
3A220-08	17	22	42	1.5	Rc1/4	30	Ø3.2	27	Ø4.2	35	Rc1/8	84	25	29.5	30.75	8.2	0	22.5
3A320-08	20	27	48	0	Rc1/4	35	Ø4.3	30.5	Ø4.3	40	Rc1/8	96	30	33	36	10.5	0	24
3A320-10	20	27	48	2	Rc3/8	35	Ø4.3	30.5	Ø4.3	40	Rc1/8	96	30	33	36	10.5	0	24
3A420-15	27	34	34.5	3	Rc1/2	48	Ø4.5		Ø4.5	50	Rc1/8	117	48	34.5	41	13	0	35