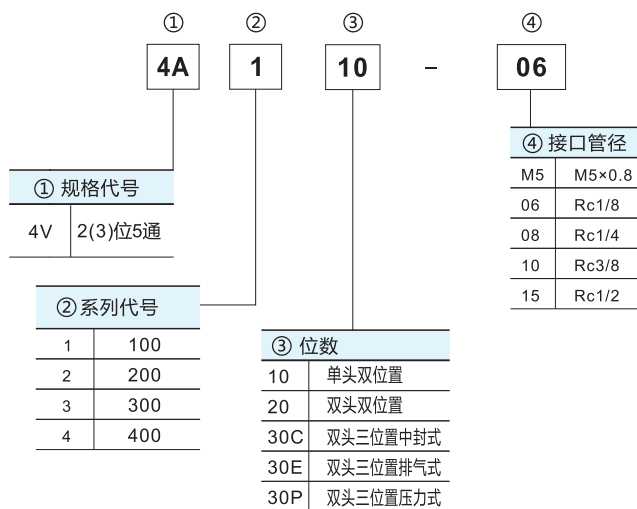


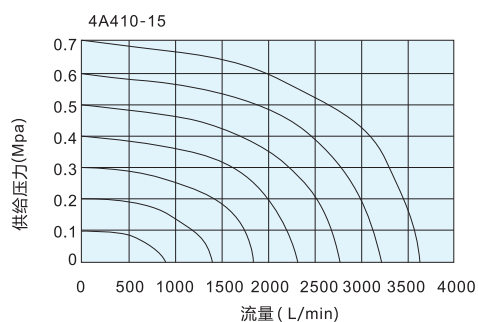
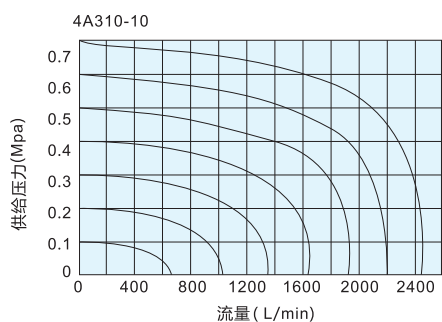
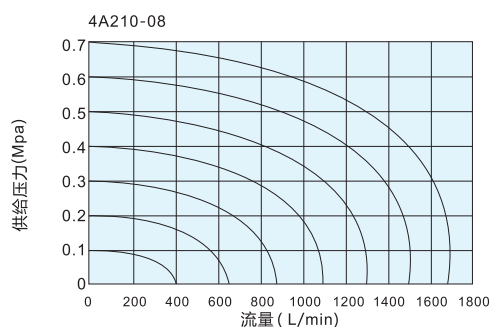
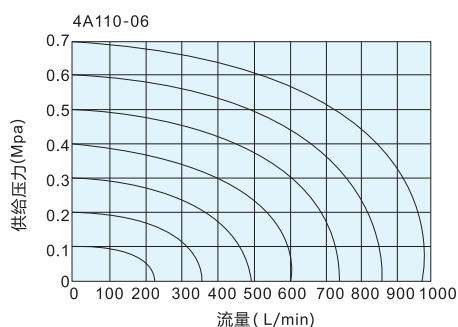
型号表示方法



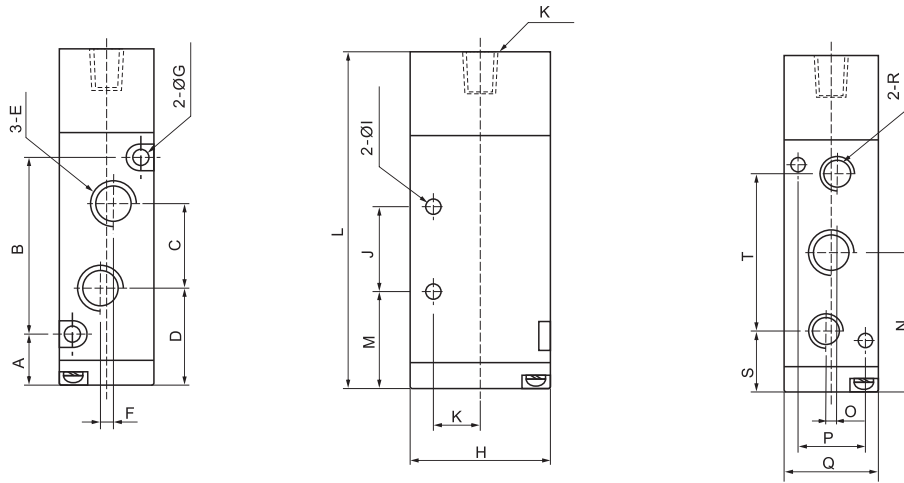
规格

允许的流体	空气
使用压力范围	0.15~0.8MPa
耐压	1.2MPa
工作温度范围	5~60°C
润滑	不需要
最高作动频率	5Hz

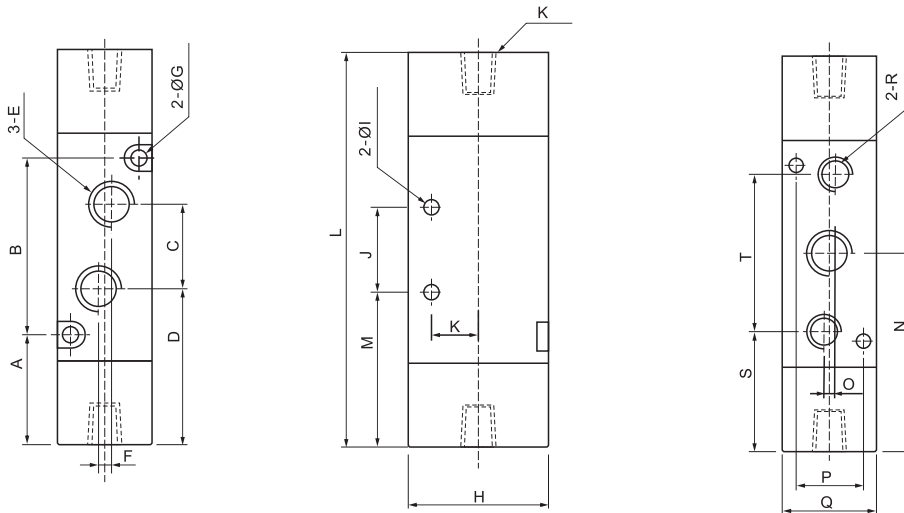
流量特性



尺寸



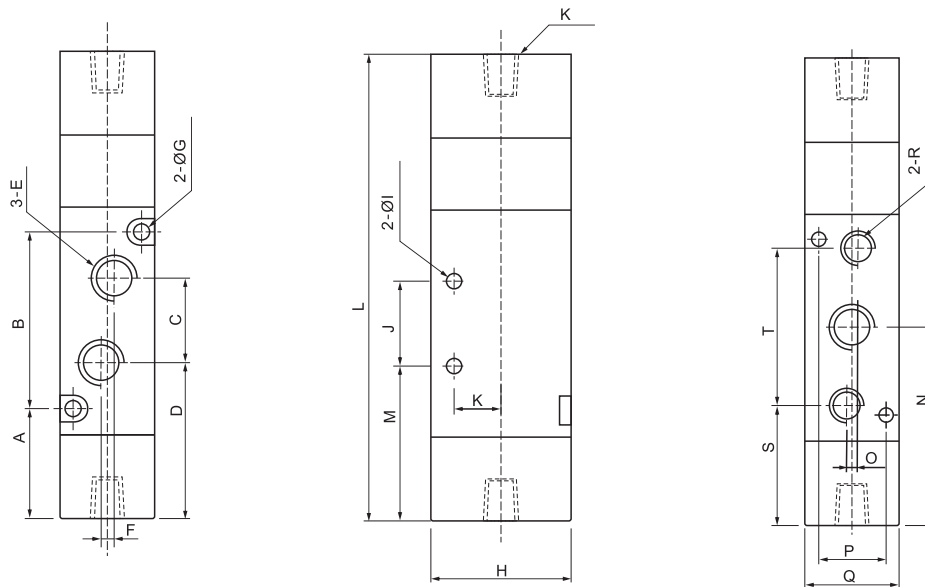
型号	A	B	C	D	E	F	G	H	I	J	K	L	M	N	O	P	Q	R	S	T
4A110-M5	13.2	30	14	21.2	M5x0.8	0	Ø3.3	27	Ø3.3	14	Rc1/8	68.7	21.2	28.2	0	13	18	M5x0.8	14.7	27
4A110-06	13.2	30	16	20.2	Rc1/8	3	Ø3.3	27	Ø3.3	14	Rc1/8	68.7	21.2	28.2	1	13	18	Rc1/8	14.2	28
4A210-06	12.7	38	18	22.7	Rc1/8	0	Ø3.2	35	Ø4.3	20	Rc1/8	92	21.7	31.7	0	17	22	Rc1/8	13.7	36
4A210-08	12.7	38	21	21.2	Rc1/4	3	Ø3.2	35	Ø4.3	20	Rc1/8	92	21.7	31.7	0	17	22	Rc1/8	13.7	36
4A310-08	15	50	22	29	Rc1/4	0	Ø4.3	40	Ø4.3	24	Rc1/8	95.5	28	40	0	20	27	Rc1/4	17.5	45
4A310-10	15	50	24	28	Rc3/8	4	Ø4.3	40	Ø4.3	24	Rc1/8	95.5	28	40	0	20	27	Rc1/4	17.5	45
4A410-15	21	72	36	39	Rc1/2	4	Ø4.3	50	Ø5.5	28	Rc1/8	128	43	57	0	27	34	Rc1/2	25.5	63



型号	A	B	C	D	E	F	G	H	I	J	K	L	M	N	O	P	Q	R	S	T
4A120-M5	25.5	30	14	33.5	M5x0.8	0	Ø3.3	27	Ø3.3	14	Rc1/8	81	33.5	40.5	0	13	18	M5x0.8	27	27
4A120-06	25.5	30	16	32.5	Rc1/8	3	Ø3.3	27	Ø3.3	14	Rc1/8	81	33.5	40.5	1	13	18	Rc1/8	26.5	28
4A220-06	27	38	18	37	Rc1/8	0	Ø3.2	35	Ø4.3	20	Rc1/8	92	36	46	0	17	22	Rc1/8	28	36
4A220-08	27	38	21	35.5	Rc1/4	3	Ø3.2	35	Ø4.3	20	Rc1/8	92	36	46	0	17	22	Rc1/8	28	36
4A320-08	30.5	50	22	44.5	Rc1/4	0	Ø4.3	40	Ø4.3	24	Rc1/8	111	43.5	55.5	0	20	27	Rc1/4	33	45
4A320-10	30.5	50	24	43.5	Rc3/8	4	Ø4.3	40	Ø4.3	24	Rc1/8	111	43.5	55.5	0	20	27	Rc1/4	33	45
4A420-15	35	72	36	53	Rc1/2	4	Ø4.3	50	Ø5.5	28	Rc1/8	142	57	71	0	27	34	Rc1/2	39.5	63

4A系列 5通气控阀

尺寸



型号	A	B	C	D	E	F	G	H	I	J	K	L	M	N	O	P	Q	R	S	T
4A130-M5	25.5	30	14	33.5	M5x0.8	0	Ø3.3	27	Ø3.3	14	Rc1/8	96	33.5	40.5	0	13	18	M5x0.8	27	27
4A130-06	25.5	30	16	32.5	Rc1/8	3	Ø3.3	27	Ø3.3	14	Rc1/8	96	33.5	40.5	1	13	18	Rc1/8	26.5	28
4A230-06	27	38	18	37	Rc1/8	0	Ø3.2	35	Ø4.3	20	Rc1/8	111	36	46	0	17	22	Rc1/8	28	36
4A230-08	27	38	21	35.5	Rc1/4	3	Ø3.2	35	Ø4.3	20	Rc1/8	111	36	46	0	17	22	Rc1/8	28	36
4A330-08	30.5	50	22	44.5	Rc1/4	0	Ø4.3	40	Ø4.3	24	Rc1/8	130	43.5	55.5	0	20	27	Rc1/4	33	45
4A330-10	30.5	50	24	43.5	Rc3/8	4	Ø4.3	40	Ø4.3	24	Rc1/8	130	43.5	55.5	0	20	27	Rc1/4	33	45
4A430-15	35	72	36	53	Rc1/2	4	Ø4.3	50	Ø5.5	28	Rc1/8	163	57	71	0	27	34	Rc1/2	39.5	63